

Power Quality Meter Model 8220



Model 8220



Features

- Measures up to 660Vrms or VDC
- Measures up to 6500Aac or 1400Adc (probe dependent)
- Displays Min, Max and Average Volts and Amps, Crest Factor, Peak value and K-Factor
- Calculates and displays Watts, VARs and VA, Power Factor and Displacement Power Factor for single-phase and balanced three-phase
- Displays total harmonic distortion (THD-F and THD-R) for voltage and current
- Displays individual harmonic values and % for Volts and Amps through the 50th harmonic
- Captures and displays inrush current
- Calculates and displays phase rotation and RPM
- Displays temperature in either °F or °C
- Displays resistance up to 2000Ω
- Conducts continuity and diode tests
- Stores up to nine complete sets of readings for all volt, amp, power, harmonics and other measurements
- Configurable from DataView[®] software or front panel
- Download stored data to DataView[®] software via optically coupled USB port
- Operates off batteries or AC adapter (optional)
- Includes DataView[®] software FREE for data storage, real-time waveform display, analysis and report generation

SPECIFICATIONS	
MODEL	8220
ELECTRICAL	
Voltage (TRMS)	Phase-to-Phase: 660V Phase-to-Neutral: 600V
Current (TRMS)	MN Clamp: 5mA to 120A or 2 to 240A MR Clamp: 10 to 1000Aac, 10 to 1400Adc SR Clamp: 3 to 1200A AmpFlex [®] : 10 to 6500A ⁽¹⁾
Frequency (Hz)	40 to 70Hz
Other Measurements	kW, kVAR, PF, DPF, VA, Phase Rotation Temperature, RPM, Resistance, Continuity, Diode Test
Harmonics	1 st to 50 th
Sampling Frequency	256 samples/cycle
Data Storage	Stores nine sets of readings for volts, amps, power and harmonics
Power Source	Six 1.5V AA Alkaline batteries AC Supply: 120/230Vac (50/60Hz) – optional
Battery Life	≥Eight hrs with display on
MECHANICAL	
Communication Port	Optically isolated USB
Display	Three-line backlit digital display with custom icons
Dimensions	8.3 x 4.3 x 2.4" (211 x 108 x 60mm)
Weight	1.9 lbs (8.8kg)
Safety Rating	EN 61010, 600V Cat. III, IP 54, Pollution Degree 2

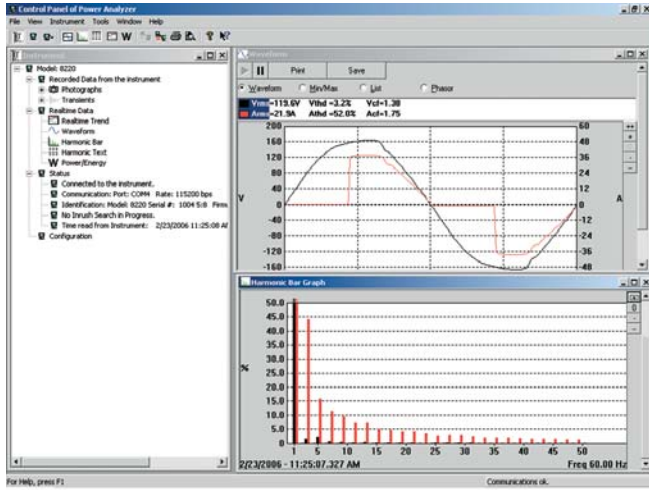
⁽¹⁾Crest factor at 6500 = 1



All models include current probe with 10 ft lead and black connector (MN93 example shown), black and red 10 ft voltage leads and alligator clips, optical USB cable, six 1.5V batteries, two safety test probes, DataView[®] software, carrying bag, soft carrying pouch and user manual.
See page 15 for optional accessories available for Model 8220.

CATALOG NO.	DESCRIPTION	
2130.91	Power Quality Meter Model 8220 w/MN93-BK (240A)	\$1,299.00
2130.92	Power Quality Meter Model 8220 w/SR193-BK (1200A)	\$1,399.00
2130.93	Power Quality Meter Model 8220 w/24" AmpFlex [®] 193-24-BK (6500A)	\$1,499.00
2130.94	Power Quality Meter Model 8220 w/36" AmpFlex [®] 193-36-BK (6500A)	\$1,599.00
2130.95	Power Quality Meter Model 8220 w/MR193-BK (1000Aac/1400Adc)	\$1,399.00
2130.96	Power Quality Meter Model 8220 w/MN193-BK (6A/120Aac)	\$1,349.00

DataView Software for Model 8220



Real-time waveform and harmonics display using DataView® software.



DataView® is included with the Power Quality Meter Model 8220. See page 15 for all of the features for DataView®.

Choose from a variety of current probe options



SR193 (1200A) current probe



AmpFlex®193 (6500A) flexible current probe (available in 24" or 36" lengths)



MN93 (240A) current probe or MN193 (6A/120A) current probe